

Pivot Pricer™

Pivot Pricer™ Profile



Single Sided Profile



Double Sided Profile

30 mm Pivot Pricer Profile

40.5mm deep

Single sided
BT-101

Double sided
BT-201

60 mm Pivot Pricer Profile

80.5mm deep

Double sided
ET-201

80mm Pivot Pricer Profile

100.5mm deep

Single sided
HT101

A5 (short side) Pivot Pricer Profile

149mm Deep

Double sided
MT-201

160 mm Pivot Pricer Profile

180.5mm deep

Double sided
NT-201

PIVOT PRICER™ PROFILE

Pivot Pricer™ Profile is a flat channel designed to hold the Pivot Pricer™ modules. No module holders required. Single or multiple number panels slide in from either end. The new hinged Pivot Pricer™ panels can be changed without having to be removed from the channel.

Pivot Pricer Profile™ (double sided) has a male fitting on one edge and a female groove on the other so multiple profiles can be joined if required. Sizes can be mixed and matched as the male/female fitting is universal to all channel widths.

The range of Pivot Pricer™ channel accessories (shown on reverse) allow it to be used anywhere. All profiles available in black or white. Supplied in 1 metre lengths or cut to size.



Pivot Pricer Channel in a Garden Centre

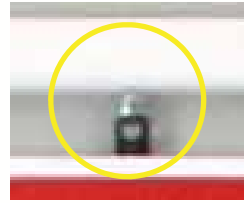


H PROFILE

Use two strips of slimline H profile to hold a Pivot Pricer™ panel. H profile can be adhered with double sided tape to display boards, sporting boards or anywhere a Pivot Pricer™ Panel needs to be displayed. Standard length 1 metre or can be cut to size. (See Maintenance Board Picture on reverse)

PFAT-101





PROFILE EYELETS

Slide into female groove on profile.
Black or White.

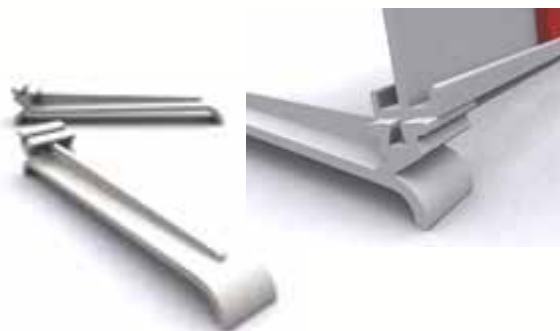
PF-T01*



PROFILE HOOKS

Slide into male fitting on Pivot Pricer profile.
Enables Profile to be hung on a pole or bar.
Black or White

PF-T03*



PROFILE FEET

Slide onto male fitting to allow the Pivot Pricer profile to be free standing on a counter top.
Fits any size channel.
Black or White.

PF-T02*



PROFILE LEG

Profile leg fits into the male fitting of the Pivot Pricer Profile. Can be adhered with double sided tape for lightweight applications or can be used with the wall plate for a more sturdy fixture.
Wall plate can be used either under or above the Pivot Pricer Profile. 75 mm high. Grey.
Profile Leg **PF-T04**
Wall Plate **PF-2122A**

