

Retail Accessories

Attachment Guns & Tags



ATTACHMENT GUNS

For speedy attachment of pricing tags to clothing, toys and other soft items. Use any tags with either plain or hook attachments. Includes safety needle cover and handy wrist strap.

Avery Dennison M3 Gun (Green) **AG-M3**

Arrow Gun (Beige) **AG-AR**



ATTACHMENT GUNS NEEDLES

Replacement needles for attachment guns.

Dennison Fine Fabric Needles (4) **AN-FF**

Dennison Standard (M3) Needles (5) **AN-ST**

Dennison Heavy Duty Needles (4) **AN-HD**

Arrow Needles (5) **AN-AR**

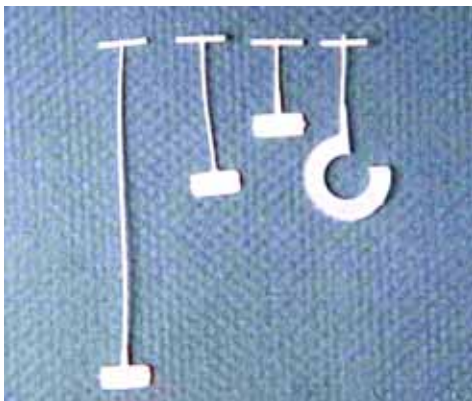


SWING TAGS

Plain white card weight tags. Perforated & punched.

T34 Tag 25 x 25mm Rolls of 500
Cartons of 4000 **CT-T34**

T74 Tag 25 x 38mm. Rolls of 1000 **CT-T74**



ATTACHMENTS

Use these to attach a tag to a garment or soft toy with an attachment gun.

13 mm attachment (5000) **AT-13**

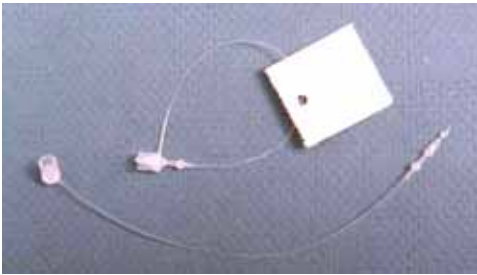
25 mm attachment (5000) **AT-25**

65 mm attachment (5000) **AT-65**

Hook attachment (2500) **AT-HOOK**

Retail Accessories

Clothing Accessories

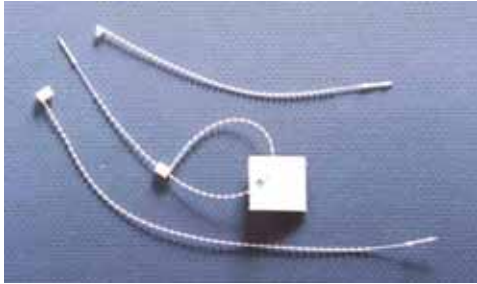


SECUR-A-TACH

Use these to attach a tag to a product by hand. Ideal for holding pairs of sandals together. Packs of 1000

125 mm Secur-a-tach
225 mm Secur-a-tach

AT-SECUR125
AT-SECUR225



SECUR-A-TIE

Use these to attach a tag to a product by hand. Can be tightened to several locking positions along the tie.

125mm Secur-a-tie (5000)
225mm Secur-a-tie (5000)

AT-TIE125
AT-TIE225



CABLE TIES

Use these to attach a tag to a product by hand. Use where strength and durability are required.

140 mm Natural (1000)
140 mm Natural (100)
140 mm Black (1000)
280 mm Natural (1000)
280 mm Natural (100)
280 mm Black (100)

AT-CABLEC
AT-CABLEC1
AT-CABLEC2
AT-CABLEF
AT-CABLEF1
AT-CABLEF1A



CLOTHING RACK SIZE DIVIDERS

Heavy duty plastic hexagonal rings slip over clothing racks to separate sizes. Supplied blank. Use P-Touch tape or permanent marker for labelling. Packs of 10

CR-SBL



CHANGEROOM TAGS

Heavy duty plastic colour coded change room tags with handy hole for hanging on coat hangers or change room hooks.

No. 1 Red **CR-1**
No. 2 Yellow **CR-2**
No. 3 Blue **CR-3**
No. 4 Green **CR-4**
Blank Black **CR-BLB**
Blank White **CR-BLW**