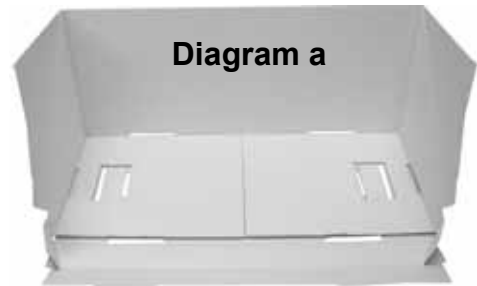
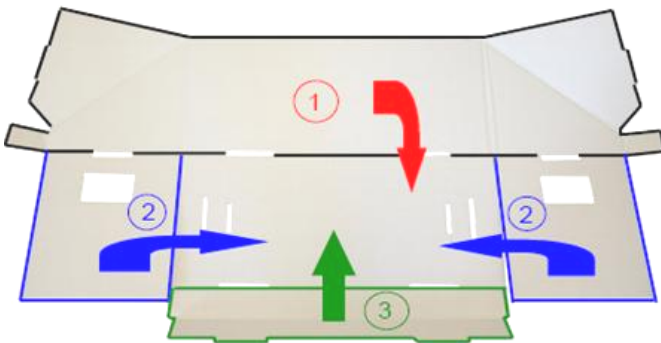




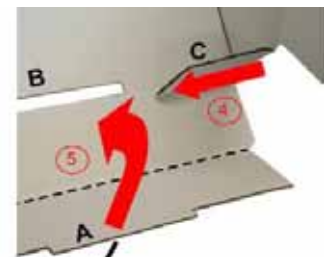
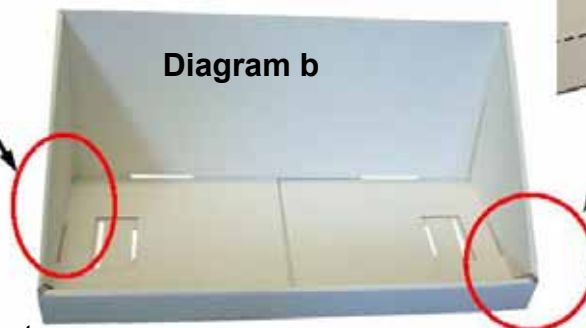
POSM PROCEDURE SHEET

Assembling the Cardboard 3 Tier Step Unit

ASSEMBLING THE SHELVES



1. Lift **Black edged area** up 90°.
2. Push the 2 **Blue edged areas** towards the centre facing each other.
3. Lift **Green edged area** up 90°. Shelf should now look like **Diagram a**.

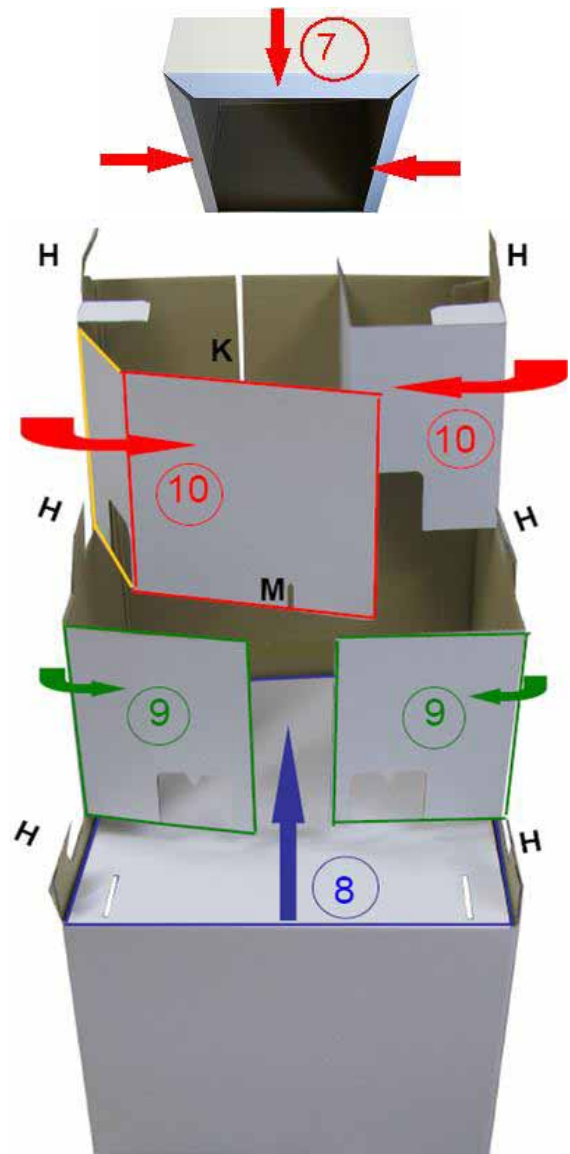


4. Push tab **C** towards centre.
5. Fold along - - - line, enclosing tab **C** as you go. Push tab **A** into slot **B**.
6. Push tab **D** into slot **E**. Completed shelf should look like **Diagram b**.

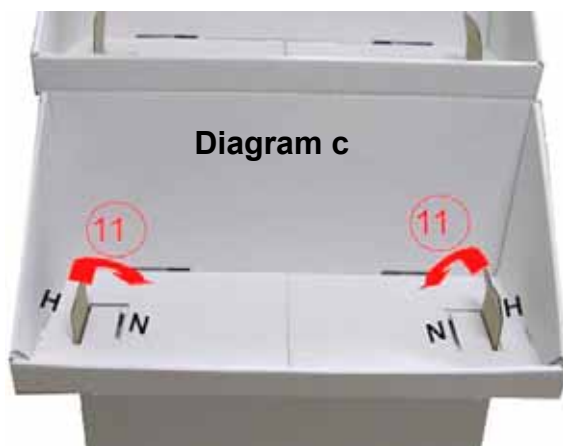
Repeat instructions for the other 2 shelves.

ASSEMBLING THE BASE

7. Push 4 sides of bottom edge into centre as shown.
8. Push **Blue edged area** down 90°.
9. Push **Green edged area** into centre as shown.
10. Push **Yellow edged area** into centre, then fold **Red edged area** towards the back, push tab **M** into slot **K**.



COMBINING SHELVES AND BASE



11. Stack shelves onto base. Push all **H** tabs into **N** slots on all 3 shelves to secure the shelf to the base.

The DISPLAY UNIT is now ready for your products!

